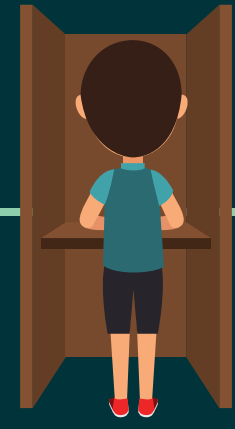


# EARLY VOTING IN MISSISSIPPI AND WHY WE NEED IT



## WHAT IS EARLY VOTING?

No-excuse early voting allows for two weeks of early voting BEFORE Election Day in Mississippi.

Early voting is NOT THE SAME AS ABSENTEE VOTING, which requires an application process and a valid excuse for voting before Election Day.

## BENEFITS

- Reduces Stress on the Voting System on Election Day
- Shorter Lines on Election Day
- Improved Poll Worker Performance
- Prevention and Correction of Errors
- Greater Access to Voting and Increased Voter Satisfaction

### ABSENTEE VOTING

VS.

### NO-EXCUSE EARLY VOTING

Requires Valid Excuse	No Excuse Needed
Length of Time To Vote Varies From County To County	Can Vote Two Weeks In Advance
Requires An Application Process & Documents Must Be Notarized	No Application or Notarized Documents Necessary. Voters Simply Show Up To Vote.
Ballots Cannot Be Corrected & Will Not Be Counted	Ballots Can Be Corrected & Counted
Available to a Limited Number of People With a Valid Excuse	Available to Everyone

## WHO HAS EARLY VOTING?

37

STATES AND THE DISTRICT OF COLUMBIA CURRENTLY OFFER EARLY VOTING.

